

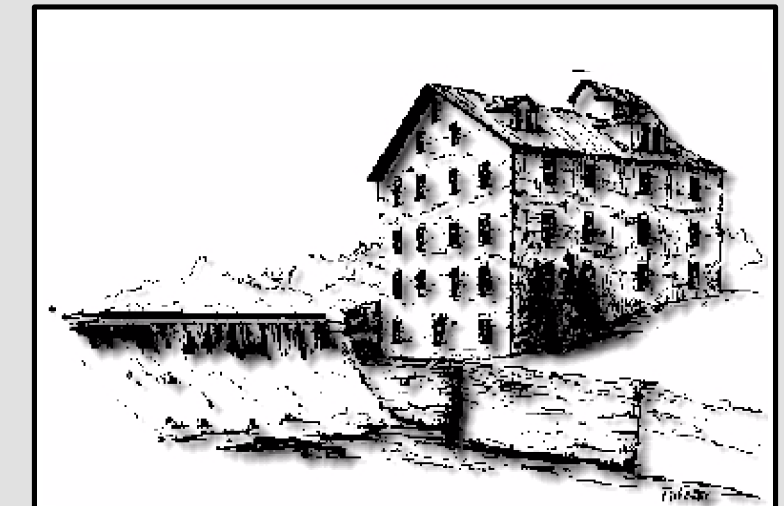
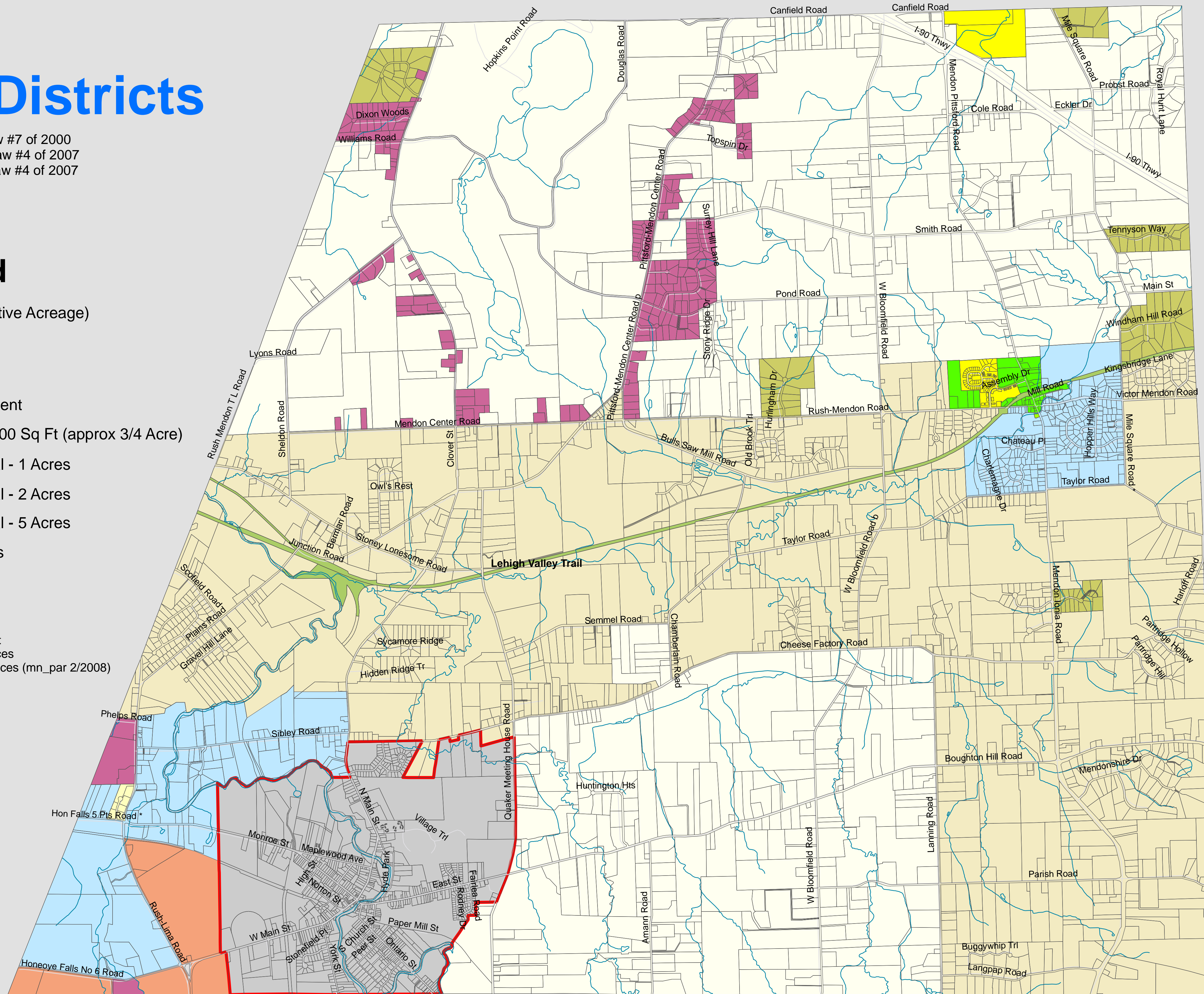
Zoning Districts

12/11/2000 - Adopted By Local Law #7 of 2000
 03/26/2007 - Amended By Local Law #4 of 2007
 09/11/2007 - Amended By Local Law #4 of 2007

Legend

-  278 Clustered (Cumulative Acreage)
-  Business
-  Industrial
-  Planned Unit Development
-  Rural / Suburban - 30,000 Sq Ft (approx 3/4 Acre)
-  Residential / Agricultural - 1 Acres
-  Residential / Agricultural - 2 Acres
-  Residential / Agricultural - 5 Acres
-  Village of Honeoye Falls

DATA SOURCE(S):
 - Town of Mendon Planning & Assessment
 - Monroe County Real Property Tax Services
 - Monroe County Department of GIS Services (mn_par 2/2008)



MONROE COUNTY, NEW YORK

Mendon

TOWN OF

Established 1813

Town of Mendon
 Department of GIS Services
 16 West Main Street
 Honeoye Falls, New York 14472

(585) 624-6066 ofc
 (585) 624-6065 fax

Prepared: March 11, 2008
 Operator: S. Roethel

www.townofmendon.org

The information on this map has been compiled by the Town of Mendon GIS Staff from a variety of sources and is subject to change without notice. This map is intended for general planning and navigation purposes and is NOT intended to convey site-specific information, nor accuracy with regards to parcels and their affected areas where applicable to feature overlays.

The sale or duplication of this map is prohibited unless authorization has been granted in writing by the Town of Mendon Department of GIS Services.

